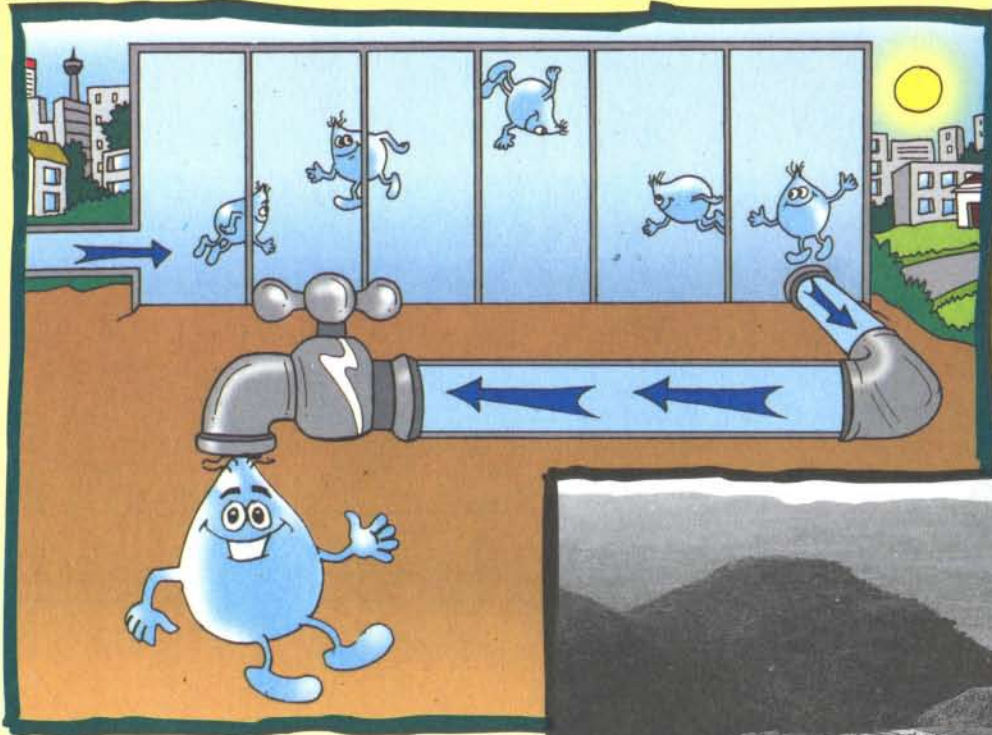


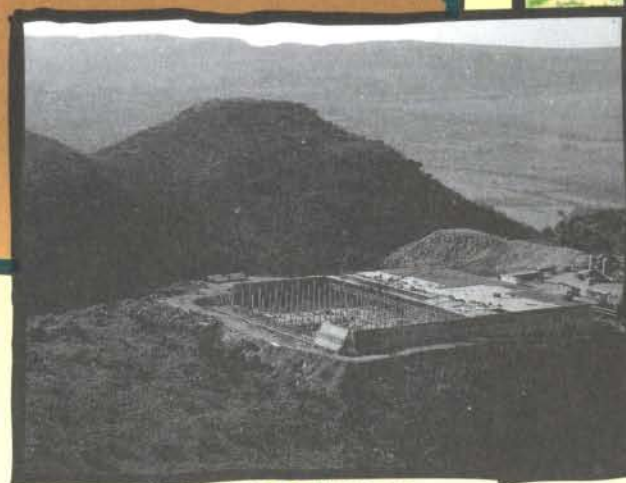
# Water Supply

## What happens to the clean water?

This clean water is pumped through underground pipes to booster pumping stations. The chlorine is only effective for 6 - 8 hours so it is necessary to add chloramine (chlorine & ammonia) to prevent any other germs, that may get into the water, from growing or multiplying. From the booster pumping stations the water is pumped into reservoirs. Rand Water then sells it to various local authorities that supply homes, schools, businesses and factories with clean water.



AREA OF SUPPLY



A RESERVOIR