

How is Tap Water Cleaned?

Where does our water come from?

Rand Water draws raw water for purification (cleaning) from the Vaal Dam (Department of Water Affairs and Forestry) through an intake tower. This raw water contains some 'passengers' that can make it unsafe to drink. The raw water is transported through canals and pipelines to Rand Water's two purification stations in Vereeniging, where it is cleaned.

'PASSENGERS':



large living organisms
(fish, crabs, floating plants)



sticks, leaves & litter



sand, soil & clay particles



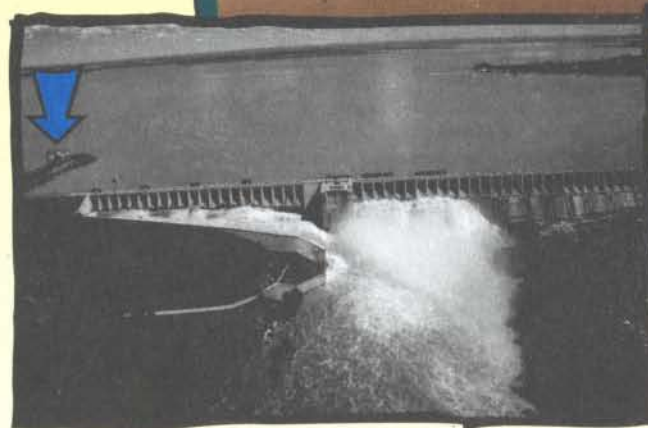
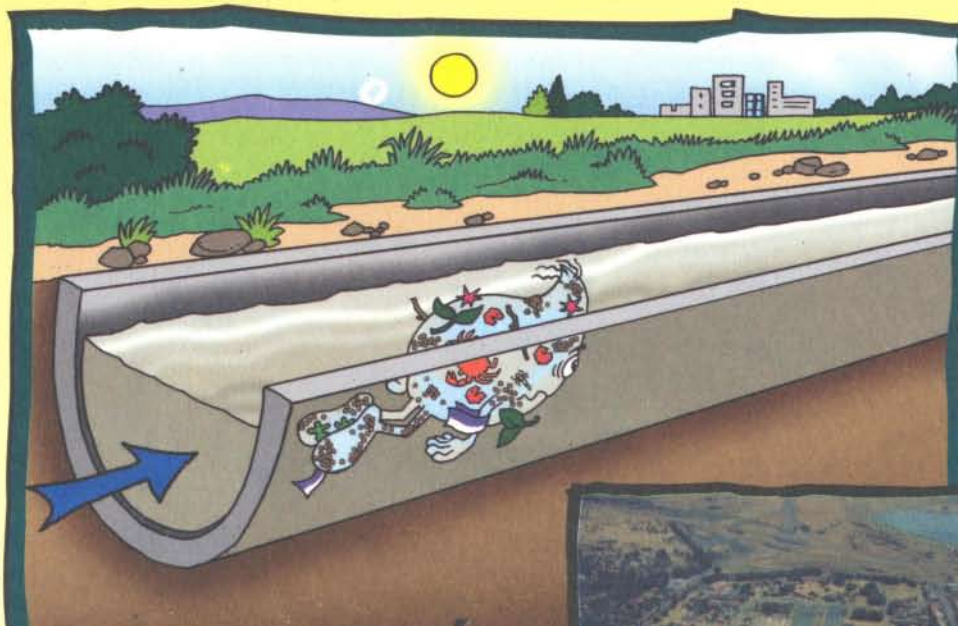
small living organisms
(insects, algae, plankton)



germs
(viruses & bacteria)



'bad guys'
(pesticides, lead, mercury, arsenic, etc.)



THE VAAL DAM, SHOWING THE INTAKE TOWER



AN AERIAL VIEW OF
A PURIFICATION STATION

Water  Wise



RAND WATER



RAND WATER