

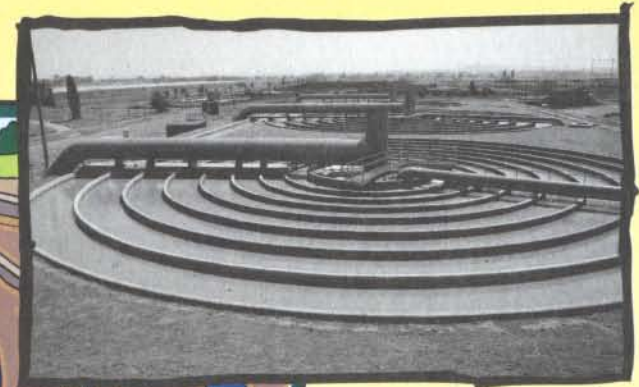
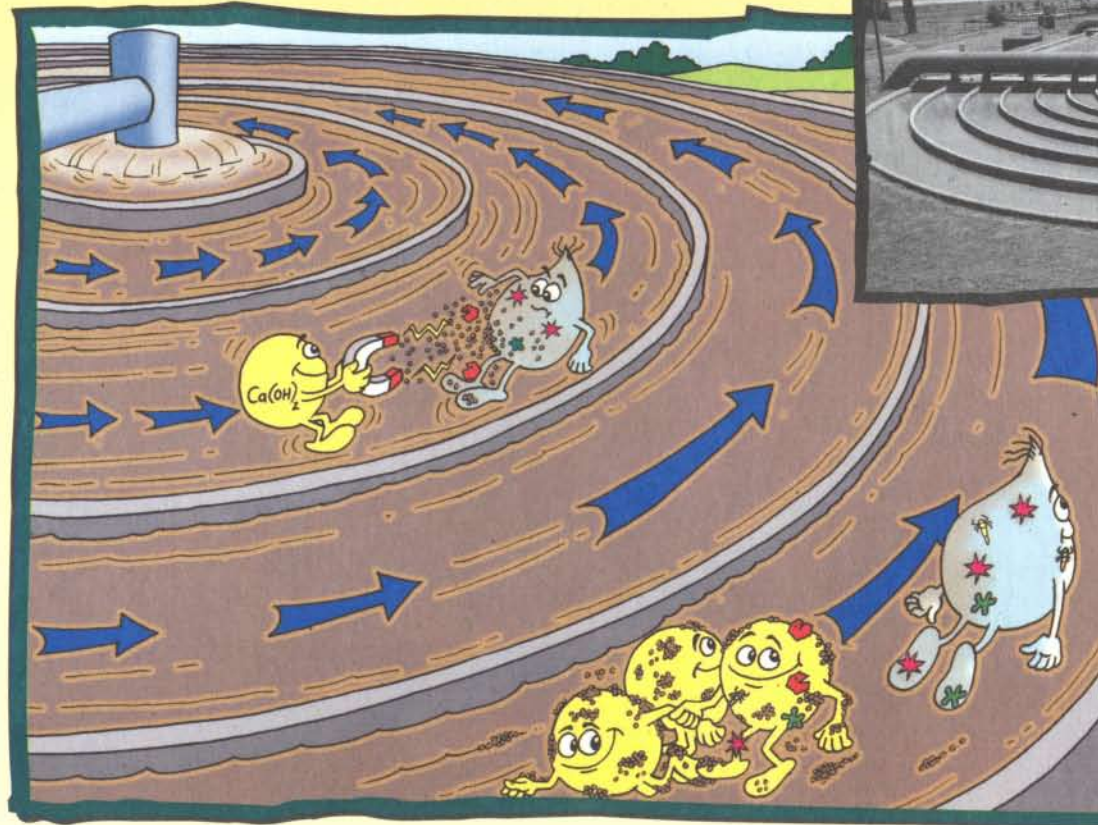
Coagulation and Flocculation

What is Coagulation?

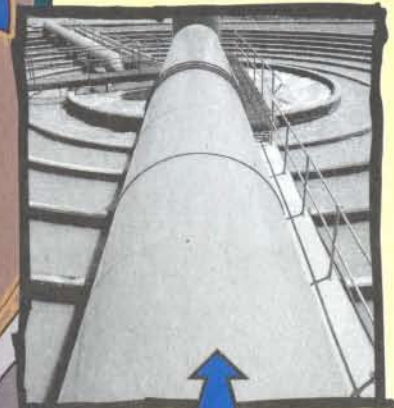
The raw water enters the middle of a spiral flocculator where slaked lime is added. This is thoroughly mixed in the rapidly moving water. The slaked lime attracts sand, soil and clay particles, some small living organisms, germs and all the 'bad guys' to form 'clumps'.

What is Flocculation?

As the water begins to slow down in the outer section of the flocculator, the 'clumps' join together to form 'floc'.



A SPIRAL FLOCCULATOR



RAW WATER ENTERING A SPIRAL FLOCCULATOR

Water  Wise


RAND WATER



RAND WATER